

# ECM Pre-mix method (WITHOUT PRE-COATING)

## Skip the time-consuming process

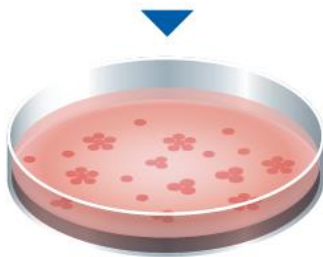
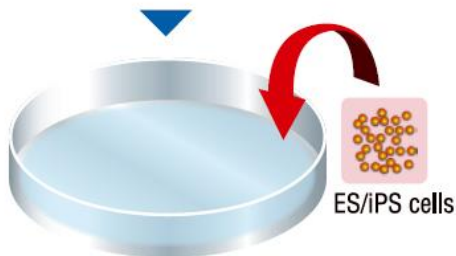
### Conventional method

**Coating**  
**iMatrix-511 or iMatrix-511 silk**  
(\*Recommended concentration: 0.5  $\mu\text{g}/\text{cm}^2$ )



**Coating treatment**

1 hour to overnight

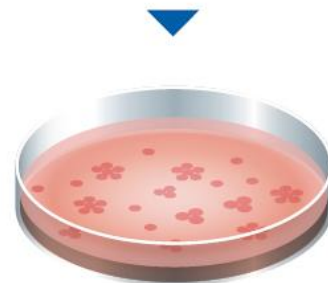


### NEW method

Add and mix iMatrix-511 or iMatrix-511 silk solution  
to the cell suspension at passaging.  
(\*Recommended concentration: 0.25  $\mu\text{g}/\text{cm}^2$ )



ES/iPS cells + iMatrix-511



### Advantages

- No need to prepare spare precoated wells
- No pre-coating necessary
- No incubation
- Require less protein

### REFERENCE

Miyazaki, T., Isobe, T., Nakatsuji, N., & Suemori, H.. Efficient adhesion culture of human pluripotent stem cells using laminin fragments in an uncoated manner. *Scientific Reports*, 7, (2017).